

# INSTRUCTION MANUAL

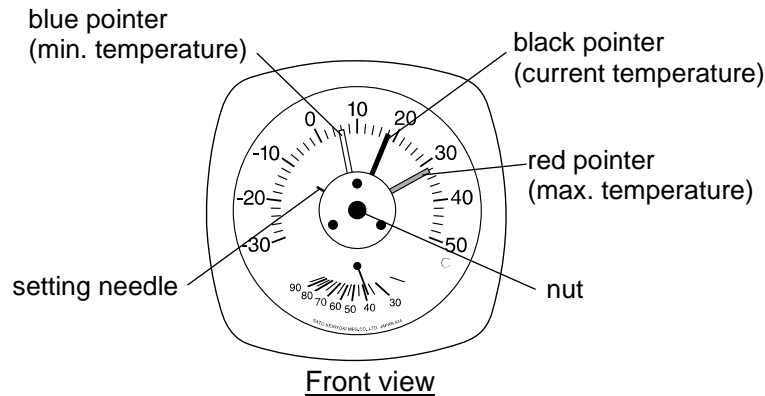
## Min-Max Thermometer with Hygrometer

### Model MIN-MAX Type I

Thank you for purchasing the min-max thermometer Model MIN-MAX Type I .

- This instrument is designed to measure temperature and humidity being mounted on a wall  
Do not use it for other purposes.
- Be sure to read this manual thoroughly before using the min-max thermometer. Keep this manual in a safety place for future references.

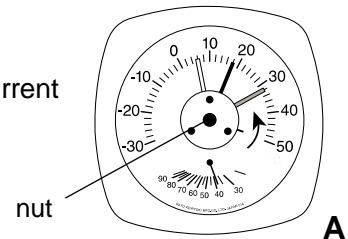
#### Name of section



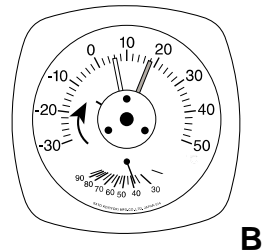
#### How to use

##### 1. Settings (before use)

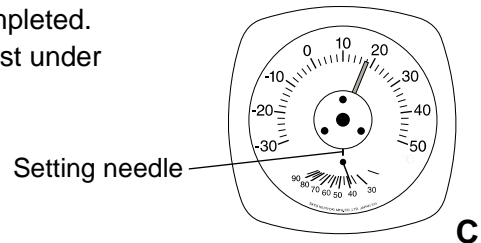
- Overlap the red pointer (max. temperature) on the black pointer (current temperature) by turning the nut counterclockwise. (refer to A)



- Turn the nut clockwise to overlap the blue pointer (min. temperature) on the black pointer (current temperature). (refer to B)

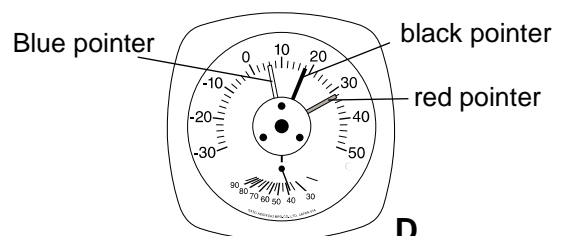


- When three pointers are overlapped, settings will be completed. After completed, be sure to set back the setting needle just under by turning the nut. (refer to C)



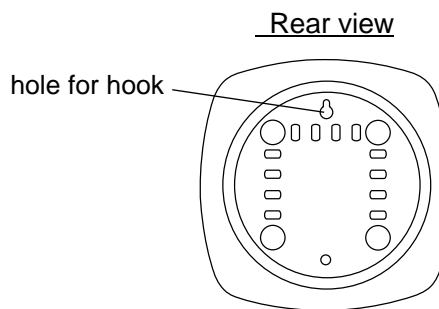
##### 2. How to read min. and max. temperatures

- The value that red pointer indicates is the maximum temperature and the blue pointer indicates the minimum temperature during the measurement (from just after the settings are completed).



### 3. Installation

Use the hooking hole shown on the rear of the case to mount the unit perpendicularly on a wall.



### Cautions in Installation

- Mount the unit at your eye level on a perpendicular wall that is free from vibrations.
- Do not mount the unit subject to direct air flow from an air conditioner or a heater.
- Do not expose to direct sunlight or splashing water.

### Notes on Use

- Do not move the black pointer by turning the setting nut.
- After completed, be sure to set back the setting needle just under by turning the nut.
- It takes about 30 min. to indicate accurate temperature after unpacked.
- This is a precision instrument. Do not drop or apply impact to it. Doing so may result in malfunction.
- Do not use this instrument in an atmosphere out of measuring range (-30 to 50° C).
- Do not use the instrument at a place subject to water splash.
- In dry, cold seasons, the hygrometer may indicate out of measuring range, but this is normal since it simply means the relative humidity is below 25%.
- If the unit becomes dirty, wipe it with a dry soft cloth.
- This instrument is not suitable to use for certification purpose.
- It is desirable to check the readings (temp./humid.) with the reliable thermometer (hygrometer) once a year.

### Specifications

	Temperature	Humidity
Measuring range	-30 to 50°C	25 to 95%RH
Accuracy	±2°C	±5%RH (at 20°C±5°C)
Materials	Case/cover: ABS resin      Window: Acryl resin	
Dimensions	180(W) mm x 180 (H) mm x 35(D) mm	
Weight	approx. 240 g	

Made in Japan

## **SATO KEIRYOKI MFG.CO.,LTD.**

3-4, Kanda-kajicho, Chiyoda-ku, Tokyo 101-0045 JAPAN

TEL: +81(0)3-3254-8117 : (0)3-3254-8123

URL: <http://www.sksato.co.jp/english/>