

# Instruction Manual

## Digital Thermometer Model PC-6800

Thank you for purchasing the Digital Thermometer Model PC-6800.

- This product is designed to measure temperature. Do not use it for other purposes.
- Read this manual thoroughly before using the PC-6800 and keep it in a safe place for your future reference.

### Warning



#### Be aware of explosion!

The PC-6800 is not explosion-proof. Never use it in an atmosphere containing flammable gases.

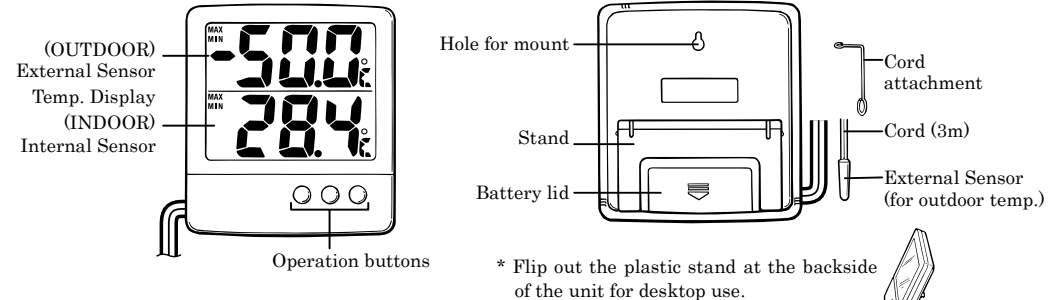
### Cautions

- This instrument is not waterproof. Avoid direct contact with water.
- Be careful for snapping the sensor cord of the external sensor.
- Do not use the instrument in ambient out of its measuring range.
- Do not bend or snap the sensor. Never stick the sensor into any solid material.
- Do not hang or pull by the sensor cord to avoid snapping the cord.
- Always use the instrument in a normal/ general ambient.



- Do not dispose used batteries in fire.
- Keep batteries out of reach of children. If swallowed, contact a medical assistance immediately.
- For environment conservation, dispose of used batteries in compliance with local rules and regulations.
- Do not use the instrument at a place exposed to direct sunlight or near heaters. Doing so can cause not just the measuring failure, but also deformation or discoloration of the instrument.
- Do not clean the instrument with alcohol, thinner or any other solvents. Use a clean cloth moistened with warm, neutral detergent water.
- Never disassemble or alter the instrument.
- This is a precision instrument. Do not drop or give a shock to it.

## Names of Sections



### Setting/Replacing battery

If using the instrument for the first time or the display has dimmed, set/replace the battery by the following procedure.

- ① Slide open the battery lid at the back of the unit and remove the exhausted battery.
- ② Load a new battery with correct polarity [(+) (-)] as indicated inside the battery compartment.
- ③ Close the battery lid.

Note: If the display does not function after loading the battery, unload the battery and leave the unit rest for about 5 minutes before reloading.

### How to Use

#### Main Unit

Install the instrument by using the stand for desktop use or the hole at the back of the case for wall-mounting.

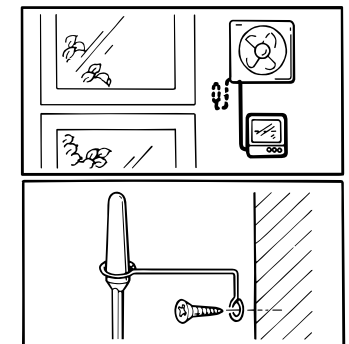
#### External Sensor

Uncoil the sensor cord and install the sensor at the measuring area.

#### < Cautions for outdoor use >

- (1) Pass the external sensor outdoor through opening of a ventilation fan.
- (2) Use the cord attachment to fix the sensor as shown in the illustration above. Make sure to install at a well-ventilated place away from direct sunlight.

Note: To avoid exposure to precipitation, please install the sensor with its tip upward.



## Taking Measurements

After the installation, please have the instrument adapt to the measurement environment for at least 30 minutes before taking measurements.

The upper LCD displays the temperature taken by the outdoor (remote) sensor and the lower LCD displays the temperature taken by the indoor (inside) sensor.

### MAX/MIN Function

The PC-6800 can display maximum measured value (MAX) and minimum measured value (MIN).



#### MIN

Press the button ② to display the minimum value (MIN). Press again to return to the normal mode.

#### MAX

Press the button ③ to display the maximum value (MAX). Press again to return to the normal mode.

#### Resetting MAX/MIN values

Press the button ① to release the recorded MAX and MIN values.

## Error Messages

If there is any malfunction on the main unit, one of the following messages might be shown on LCD.

If you keep having troubles operating the instrument, please contact the retailer you have purchased this product from or visit our website for further assistance.

Display	Error Code	Cause	Solution
Upper LCD	LLL	OUTDOOR temperature is below the measuring range. (below -50°C)	Use the instrument within its measuring range.
	HH.H	OUTDOOR temperature is above the measuring range. (above 70°C)	
Lower LCD	LLL	INDOOR temperature is below the measuring range. (below -5°C)	
	HH.H	INDOOR temperature is above the measuring range. (above 50°C)	

## Specifications

Name	Digital MAX/MIN Thermometer
Model	PC-6800
Cat. No.	1060-00
Measuring Range	Interior Sensor : -5 to 50°C Exterior Sensor : -50 to 70°C
Accuracy	Interior Sensor : ±1°C (at 0 to 40°C), ±2°C at other range Exterior Sensor : ±1°C (at 0 to 40°C), ±2°C at other range
Resolution	0.1°C
Sensing element	Thermistor
Sampling Time	every 10 seconds
Operation Condition	-5 to 55°C, less than 85 % rh (no condensing)
Power Requirement	1.5VDC (one AAA battery)
Battery Life	about 10 months (in normal ambient)
Dimensions	Main Unit : (W) 99 × (H) 197 × (D) 20 mm Cord Length : about 3 m
Materials	Main Unit : ABS resin External Sensor: Sensing part: Polycarbonate resin Sensor Cord: PVC resin
Weight	about 145 g (including battery)

### **SATO KEIRYOKI MFG. CO., LTD.**

3-4, Kanda-kajicho, Chiyoda-ku, Tokyo 101-0045 Japan

URL: <http://www.sksato.co.jp/english/>